

# Universal Remote

RM4 mini



Q | BroadLink International

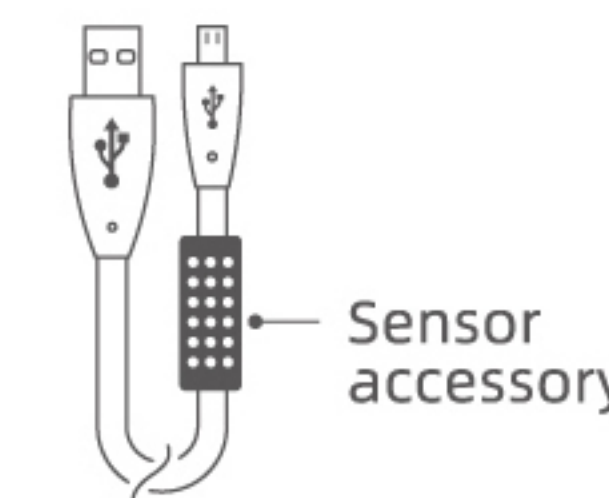
For more promotions and supports

web: [www.ibroadlink.com](http://www.ibroadlink.com)  
e-mail: [support@ibroadlink.com](mailto:support@ibroadlink.com)

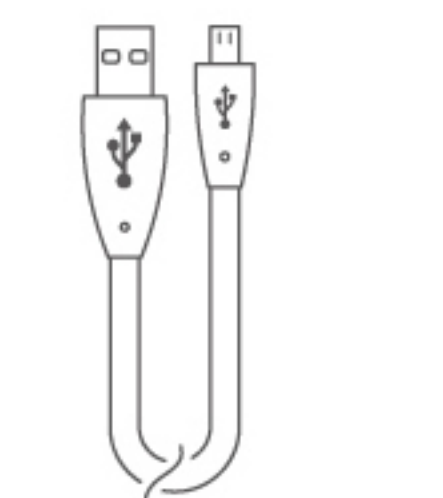
## What's included

After opening package, please check contents as below (unit:mm).

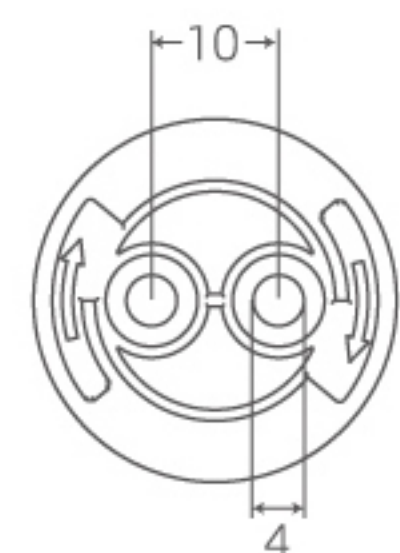
Model	Device	Mounting board	USB cable	USB cable with sensor	Guide
RM4 mini	x1	x1	x1	/	x2
RM4 mini with sensor cable	x1	x1	/	x1	x2



HTS2  
USB cable with sensor  
overall length: 1000±50

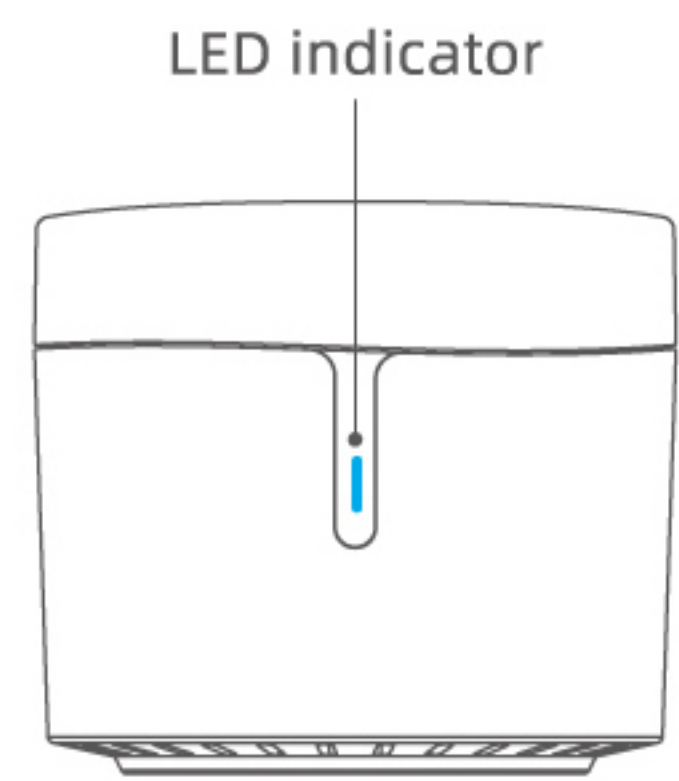


USB cable  
overall length: 1000±50

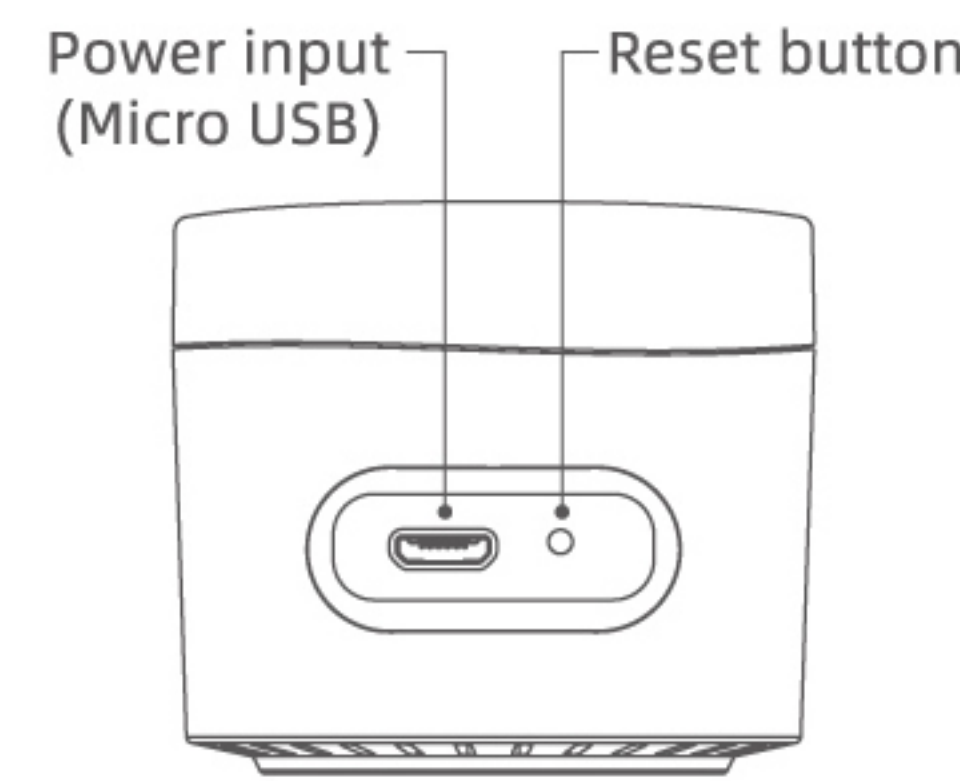
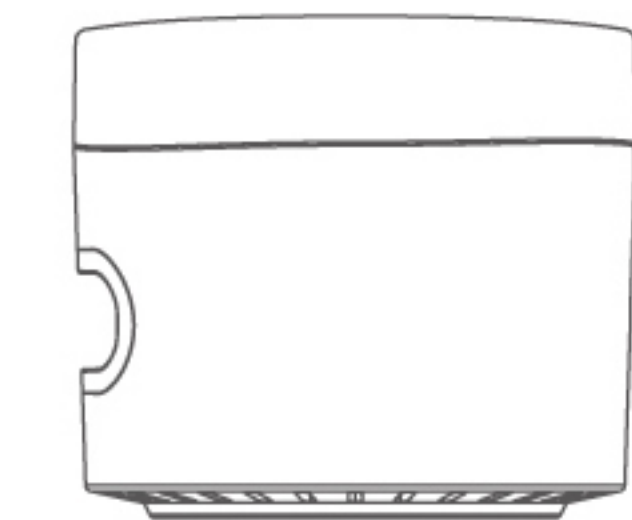


Mounting board  
size: 28.5 x 28.5 x 5mm

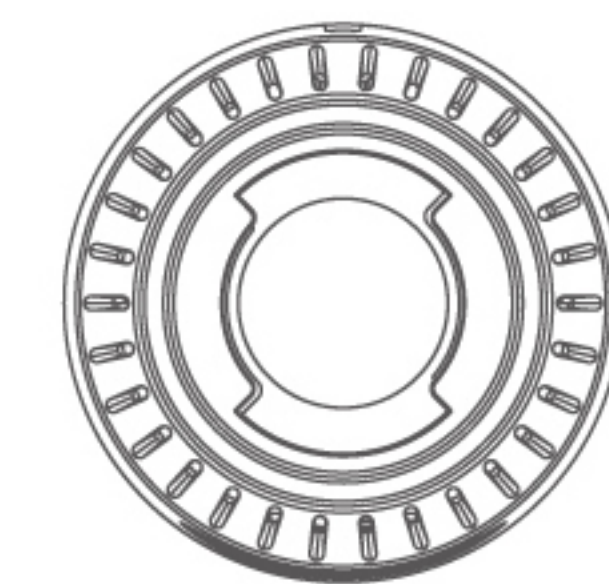
## Overview



Front  
size: 48 x 48 x 43.2mm



Back



## Indications

Status	Indication
Flashes quickly (5 times/sec)	Device is in Smart Setup mode (waiting to be added).
Flashes intermittently	Device is in AP Setup mode (waiting to be added)
Flashes slowly then off	Device is being set up and added to network
Flashes slowly continuously	Device is failed to connect to network or disconnected from network
Flash once	IR signal is sent

### Reset for AP Setup

When the device is in any conditions, press and hold the reset button using a needle for 5s until the LED flashes intermittently. DO NOT hold longer than 10s, otherwise it will go to Smart Setup mode.

### Reset for Smart Setup

When the device is in any conditions, press and hold the reset button using a needle for 10s until the LED flashes quickly.

## Troubleshooting

### 1. I can't add the device in APP, I don't know what is the problem?

Make sure your Wi-Fi network is 2.4GHz and password contains no more than 32 non-special characters. Make sure there are not too many devices in network (no more than 15 normally including Phones. Pads, Laptops...).

### 2. I can't find the device in Alexa and Google Home App. How can I do?

- Alexa and Google Home will recognize sub-devices (IR devices) not universal remote itself.
- Make sure the IR devices can be controlled from external networks in BroadLink App before discovering in Alexa and Google Home.

### 3. How to use sensor cable HTS2?

If you bought the product with sensor cable and use it with your universal remote, the temperature and humidity data will be displayed automatically on App after the universal remote is added.

## Important notices

- Please choose the proper adapter which output power is 5V DC 1A.
- For indoor use in dry environment only.
- Keep clear space with the device.