



Installation and usage guide of the new generic USB DAC driver for FiiO players/DAC

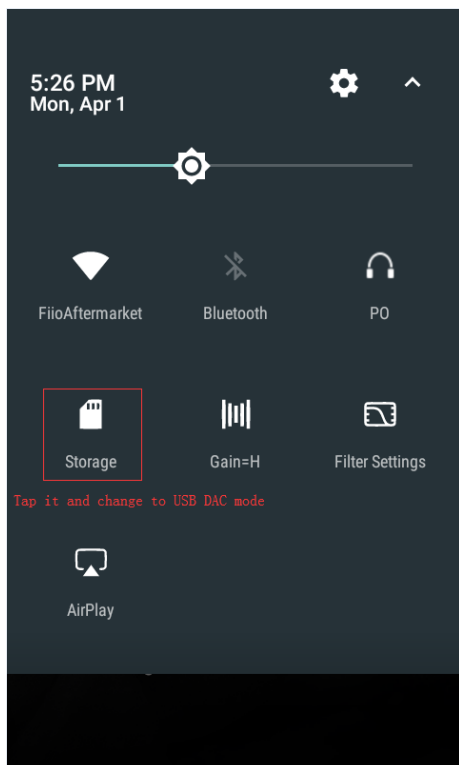
In order to bring more convenience to our users, we have specially developed a new generic USB DAC driver for our players that have DAC function. Now with just one installation of the new driver, you will be able to connect different models of FiiO player to your computer as DAC.

The new driver has also been implemented with new icons and interface. And below are the detailed instructions of the installation and usage (We will use the M9 and Windows 10 as an example).

A. Install the generic USB DAC driver

(Note: The driver can be installed directly on Windows 8/8.1/10. But for some versions of Windows 7 you may need to first disable the driver signature enforcement before the installation. If you are using Windows 7, please see the Appendix at the end of the tutorial for more information.

1. Update the M9 to the latest version of firmware, then switch the USB mode from "Storage" to "USB DAC" in the pull-down menu (On other players, please enable the mode in Settings->Audio->USB DAC).



2. Connect the M9 to the computer via USB.

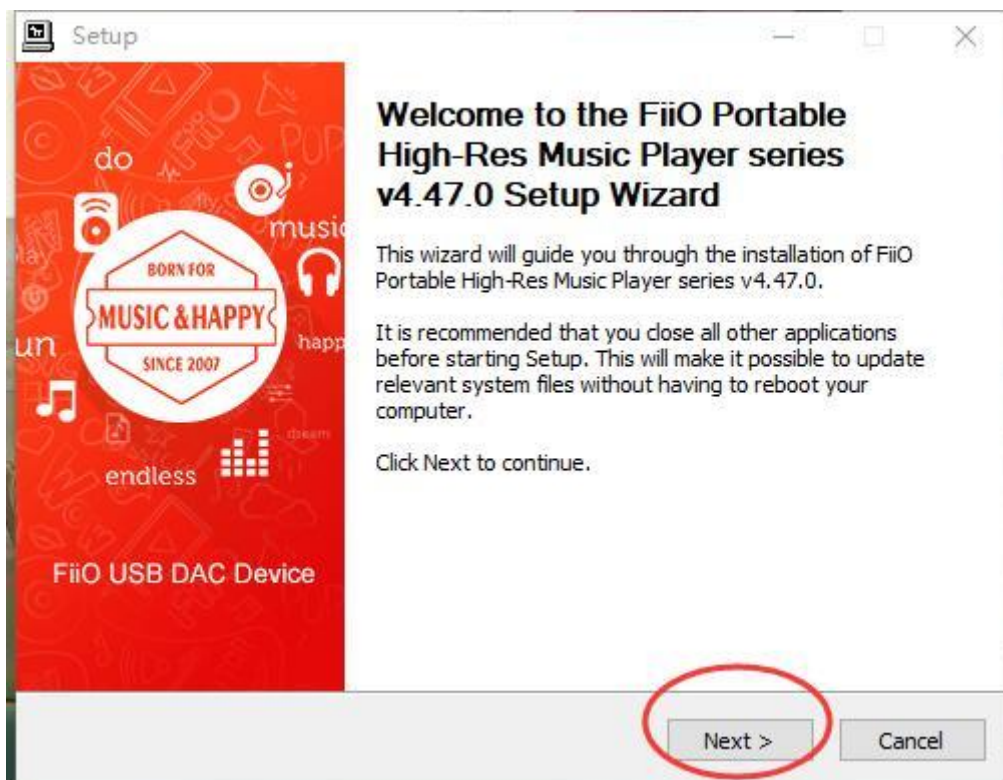


3. Download the driver package from our official website:

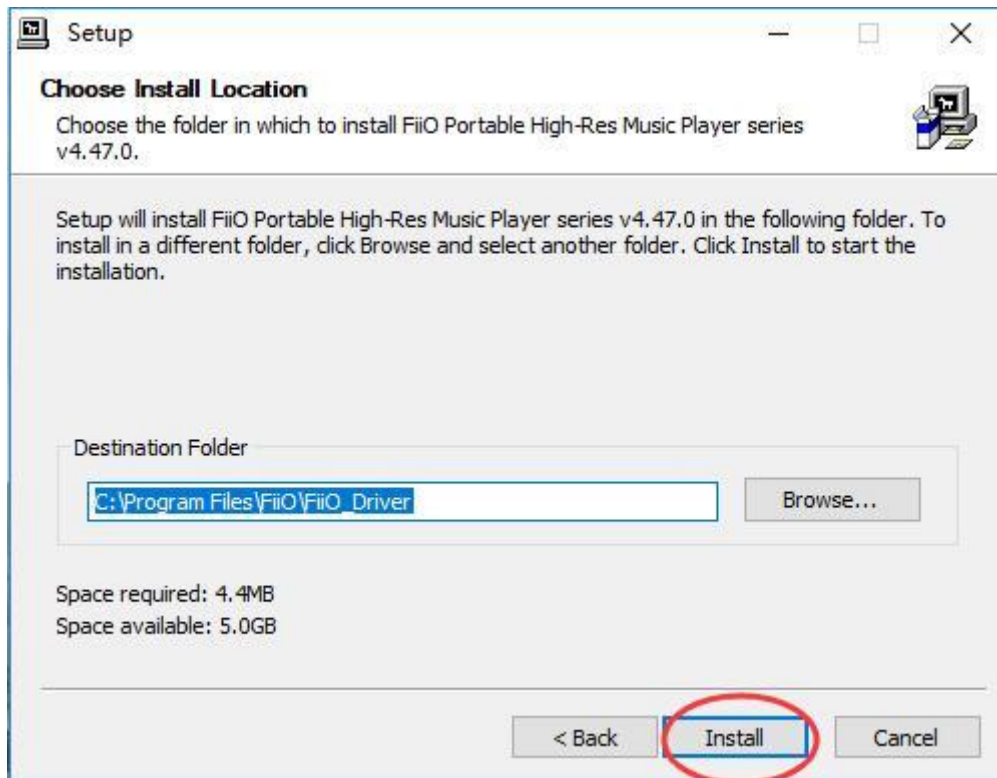
http://fiio-file.fiio.net/FiiO_USB_DAC_Driver-V4.47.0.zip then unzip the package and double click to run the "FiiO_USB_DAC_Driver)Setup_v4.47.0.exe" .



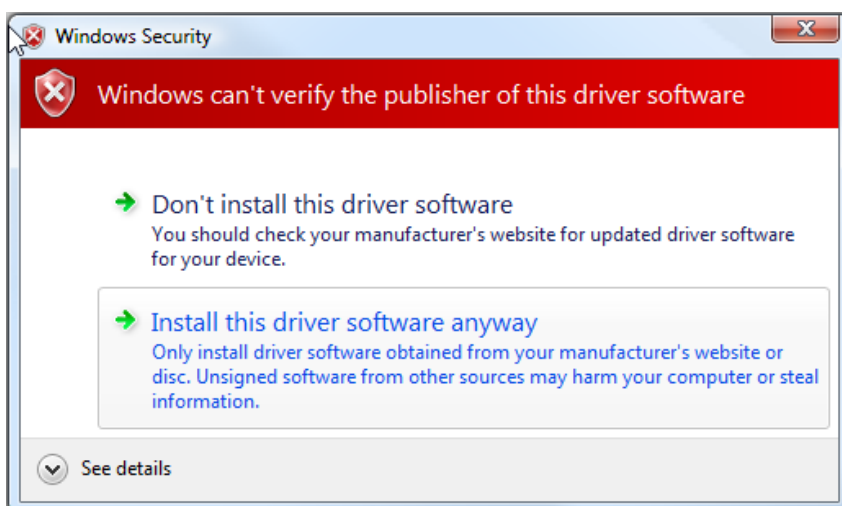
4. At the Welcome page, click "Next". If the player is connected successfully the application will enter the Choose Install Location page as in Step 5. If not, please try to re-connect the player to the computer.



5. At the Choose Install Location page, Click "Install" to start the installation (it's recommended to use the default Install location).



6. On Windows 7, there might be a pop-up windows appearing with a warning notice. If it appears, please simply click "Install this driver software anyway" to continue. (This would happen because that some versions of Windows 7 might not support the type of driver signature that we use. But on Windows 8/8.1/10, there shall not be such a problem).



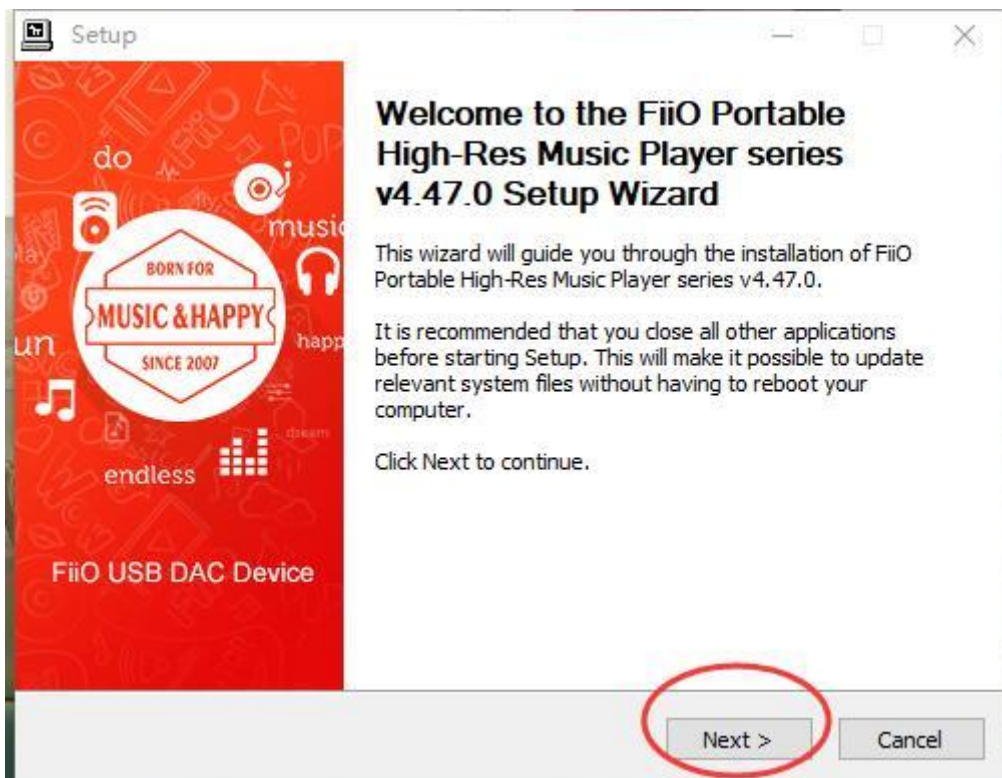
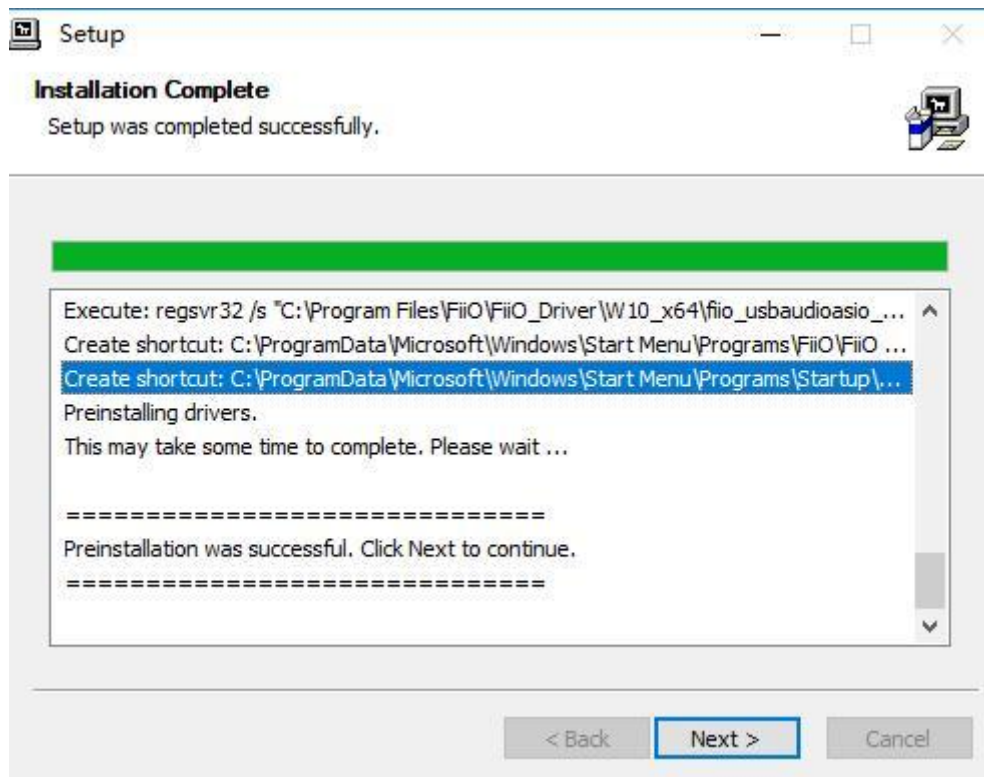
Special notice:

The driver program will generally do some sensitive operations on the Windows system, such as modifying the I/O configuration and Windows registry. For a few anti-virus softwares (e.g. Virustotal), they may automatically prohibit the driver from doing these operations or mistakenly recognize the program as a malware. If that happens, please kindly set the anti-virus software to trust the driver setup program and allow its operations. There's no need to worry about the safety issues regarding to our driver program, but it's highly suggested to always download the driver package from our official website: <http://fiiio.net/en/supports>

Antivirus	Result	Update
Rising	PE:Malware.Generic(Thunder)!1.A1C4 [F]	20160302
ALYac	✓	20160303
AVG	✓	20160303
AVware	⊖	20160303



7. At the Complete page, click "Next" then "Finish" to complete the installation.



8. After the installation completes successfully, you can find the M9 listed under the category "Sound, video and game controller" in Device Manager.

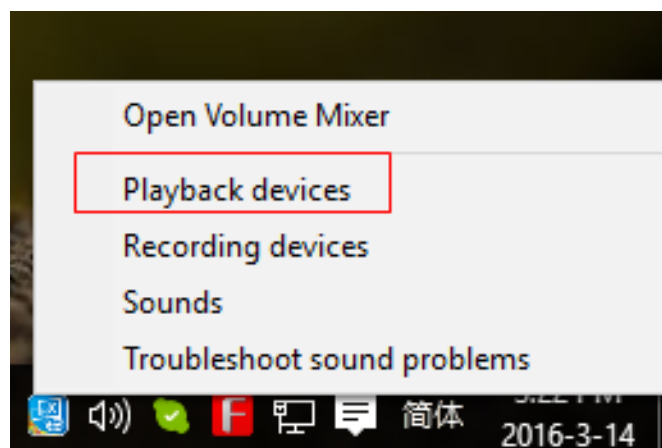
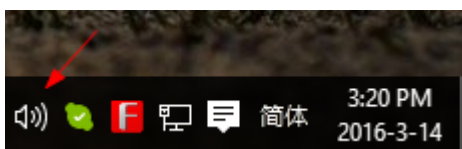
B. Use the FiiO player as USB DAC for computers

(In this tutorial, we will be using the M9 and foobar2000 as an example of using the player as USB DAC for computers.)

1. After the M9 is connected successfully to the computer as DAC, you will find a "FiiO Control Panel" icon displayed in the notification area at the bottom right corner of the desktop screen.

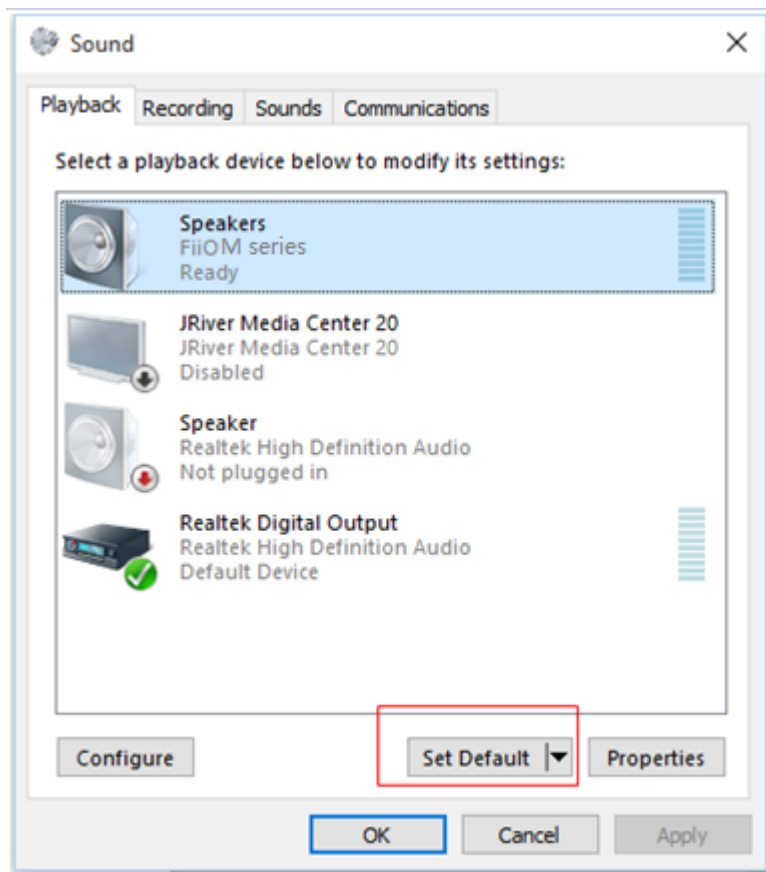


2. Right click the Sound icon in the notification area, then click "Playback devices".

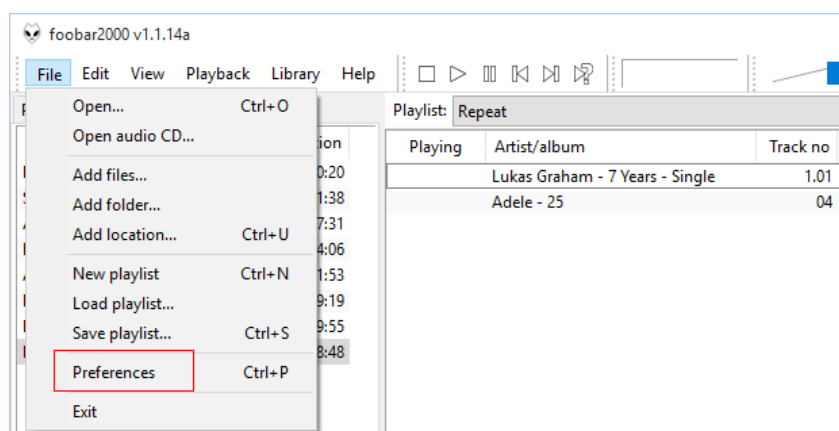




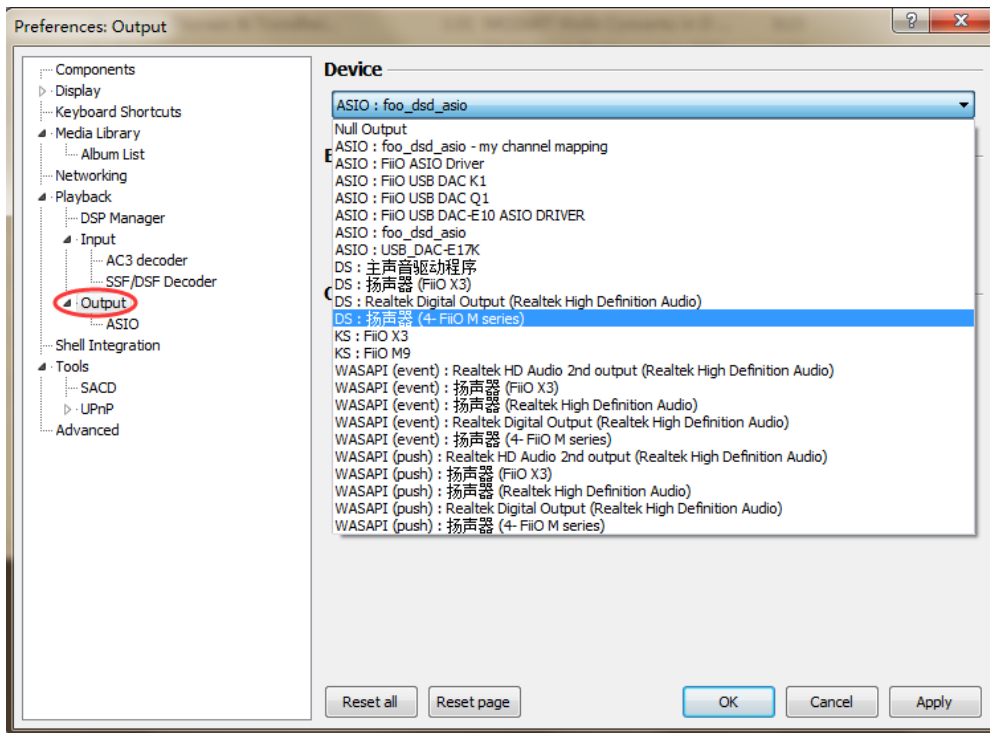
3. In the Sound panel, select the FiiO M series, click "Set default" then click OK to set the M9 as default playback device.



4. Open the foobar2000 and select File->Preferences.



5. Under the "Output" category, select the M9 from the Device list then click OK.



6. After the above operations, you can plug your headphone to the M9 and start to enjoy the music played on your computer in high quality!

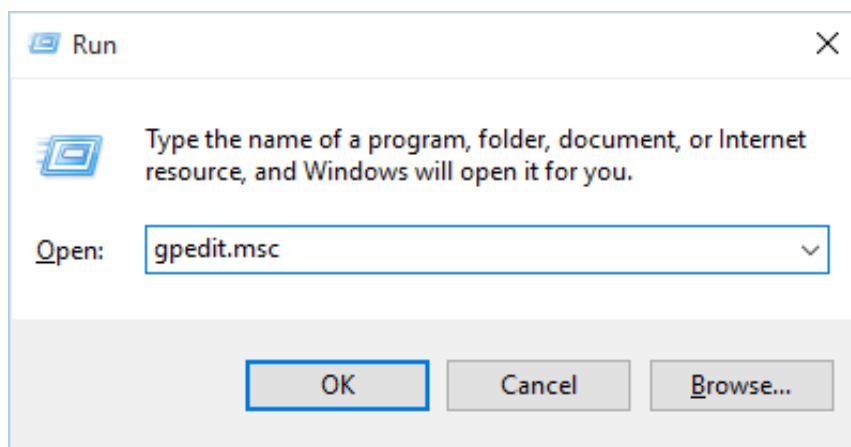
Appendix I: Disable driver signature enforcement on Windows 7

For some versions of Windows 7, it cannot properly recognize the type of driver signature that we use and will cause the installation to fail. So you need to disable the driver signature enforcement before the installation.

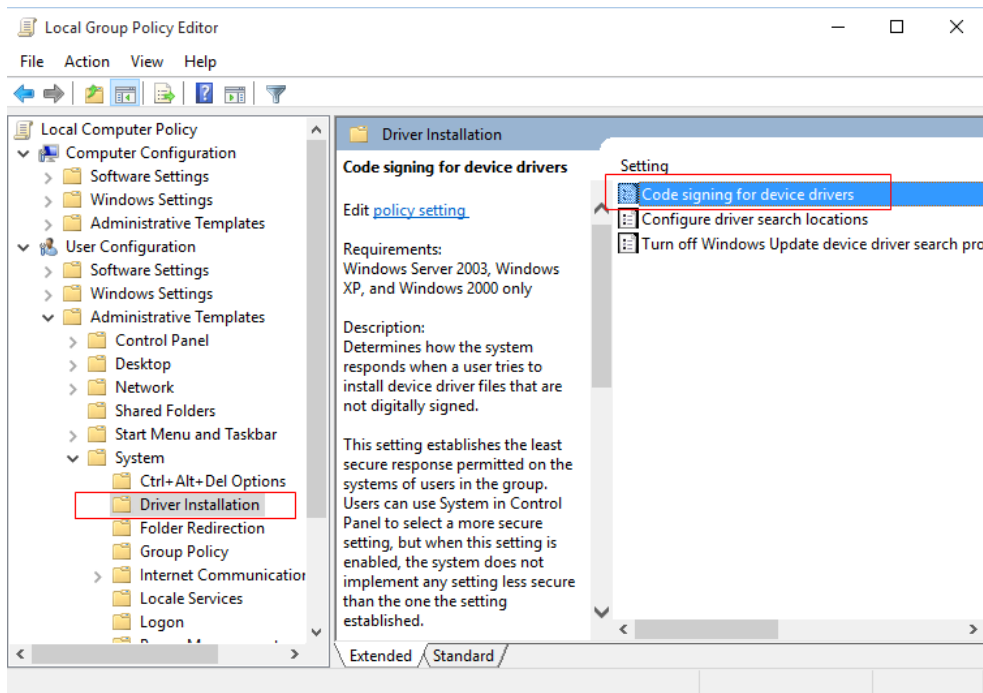
(But if it still fails after disabling the driver signature enforcement, you may also need to update your system. In that case, please check Appendix II).

Method 1

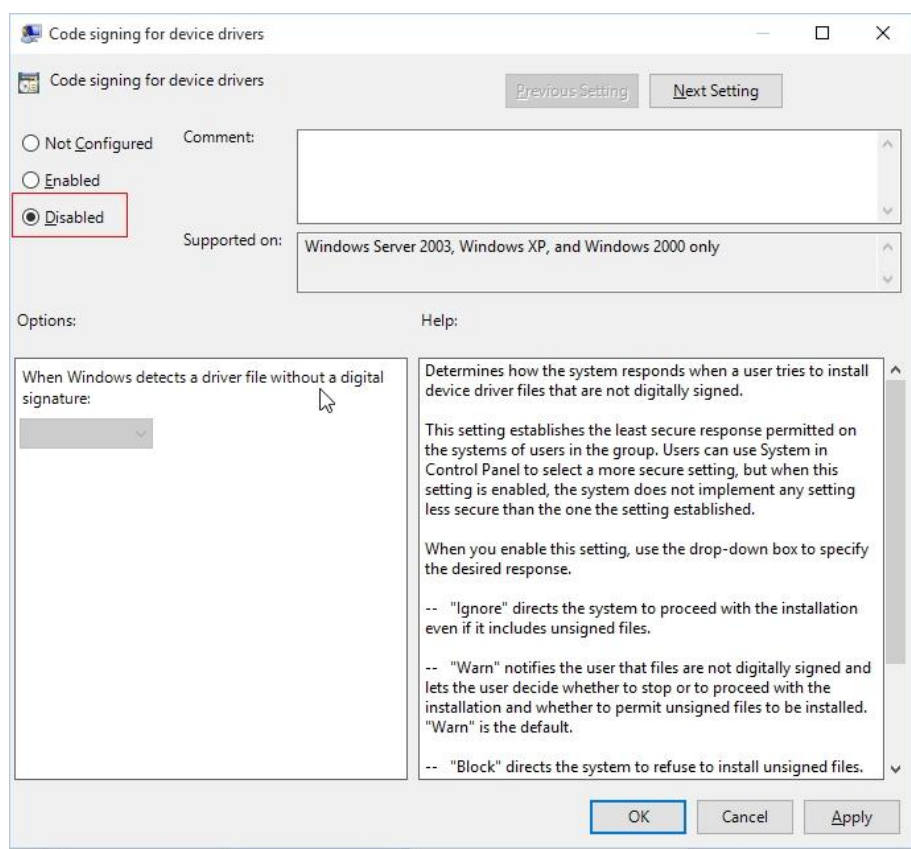
1. Press the Winows key + R on the keyboard to open the Run box, then enter **gpedit.msc** and click OK



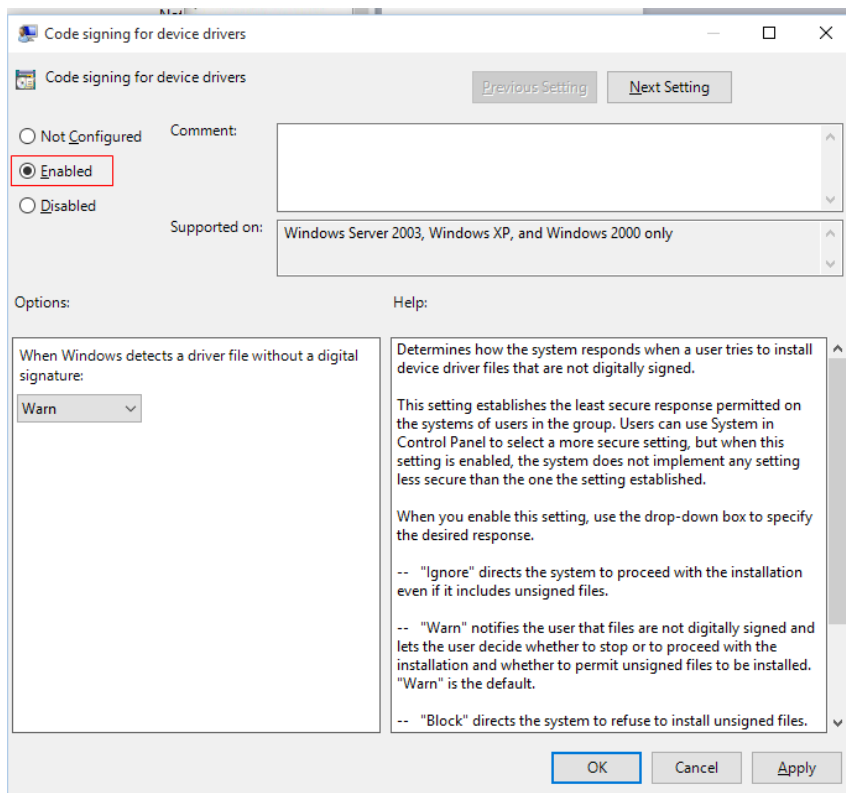
2. In the "Local Group Policy Editor" window, select **User Configuration** ->**Administrative Templates**->**System**->**Driver Installation**. Then in the setting area, double click the "**Code signing for device drivers**" option (Or right click then select edit).



3. In the "Code signing for device drivers" windows, select the "Disable" option and click OK. After that the driver signature enforcement will be disabled.

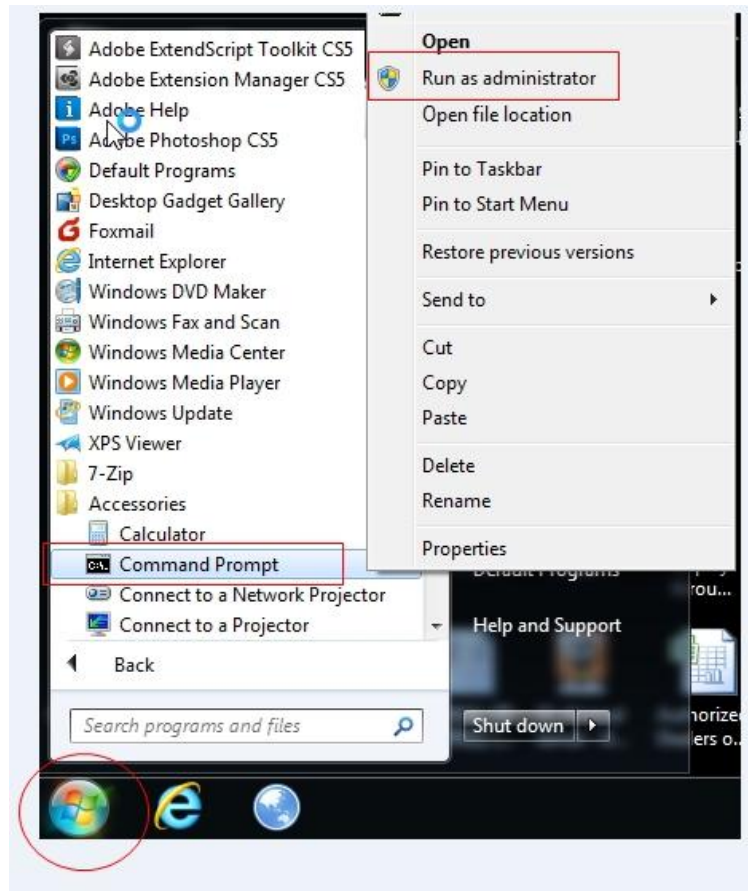


4. For safety, it's recommended to enable the driver signature enforcement again after the DAC driver installation completes.



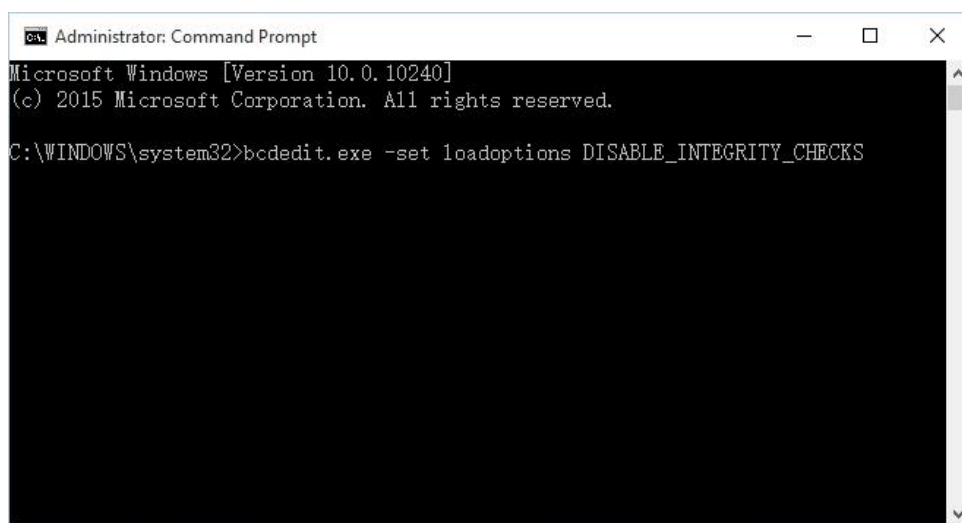
Method 2:

1. Go to Start->All programs->Accessories, then right click Command Prompt and select "Run as administrator". Or you can search for it using the Search box.

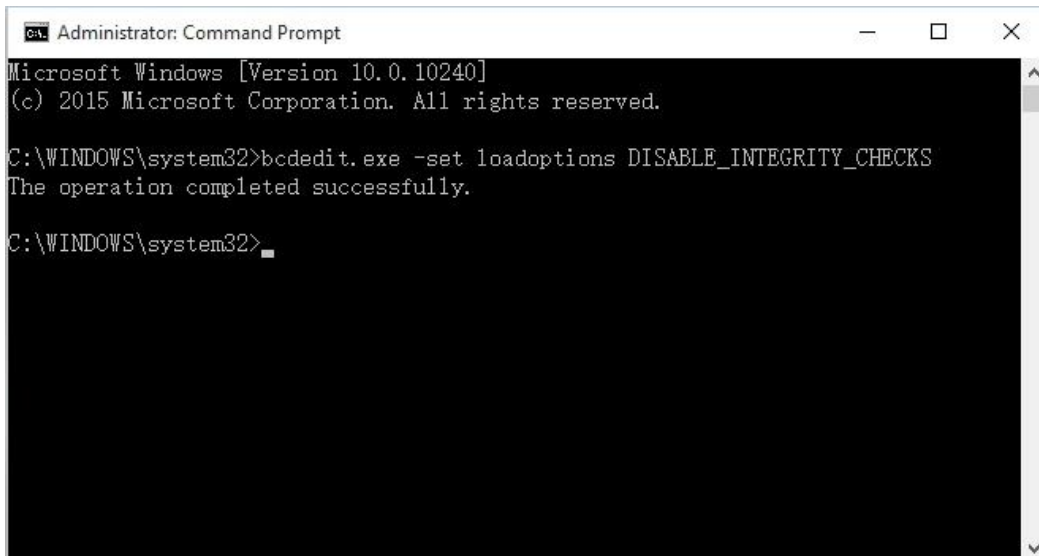


2. Enter the below command in the cmd menu. (You may also try to copy the command then right click on the cmd menu, select Paste and press the Enter key).

bcdedit.exe -set loadoptions DISABLE_INTEGRITY_CHECKS



3. If the cmd shows the prompt "The operation completed successfully", then it means the driver signature enforcement has been disabled.



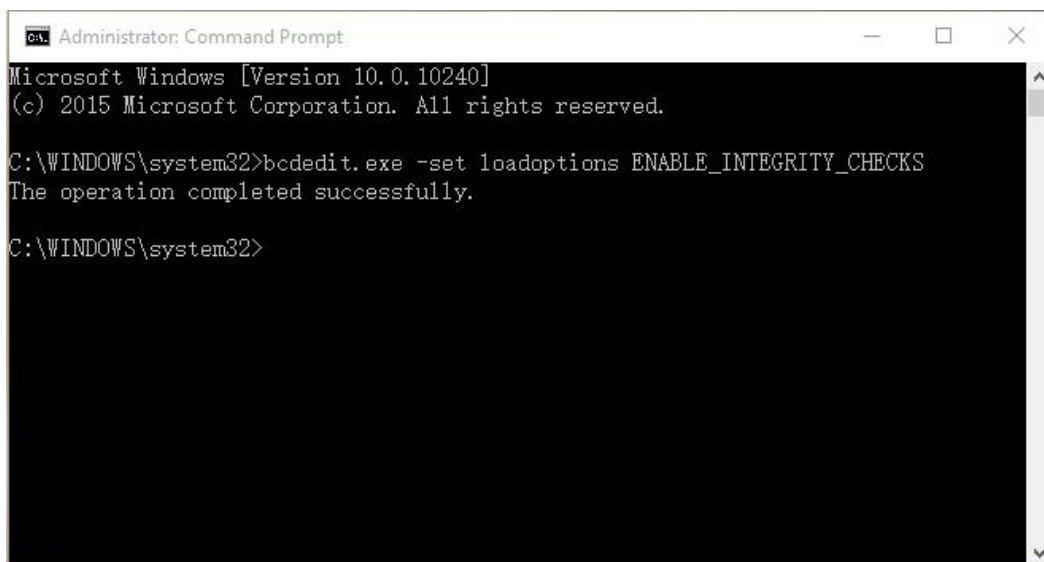
```
Administrator: Command Prompt
Microsoft Windows [Version 10.0.10240]
(c) 2015 Microsoft Corporation. All rights reserved.

C:\WINDOWS\system32>bcdedit.exe -set loadoptions DISABLE_INTEGRITY_CHECKS
The operation completed successfully.

C:\WINDOWS\system32>
```

4. For safety, it's recommended to enable the driver signature enforcement with the below command after the driver installation completes.

bcdedit.exe -set loadoptions ENABLE_INTEGRITY_CHECKS



```
Administrator: Command Prompt
Microsoft Windows [Version 10.0.10240]
(c) 2015 Microsoft Corporation. All rights reserved.

C:\WINDOWS\system32>bcdedit.exe -set loadoptions ENABLE_INTEGRITY_CHECKS
The operation completed successfully.

C:\WINDOWS\system32>
```



Appendix II: Update Windows 7 for accepting SHA256 certificates

Our driver package is signed with a SHA256 certificate. Windows 8 and 10 accept this SHA256 certificate by default.

On Windows 7 Microsoft has released a patch to also accept SHA256 certificates.

You will get it through Windows update or you can be downloaded here:

<https://www.microsoft.com/en-us/download/details.aspx?id=46148>

The description from Microsoft can be found here:

<https://support.microsoft.com/en-us/kb/3033929>

Windows 7 only accepts SHA1 certificates by default. But SHA1 certificates are deprecated and shouldn't be used anymore. You also don't get new SHA1 certificates from the certificate providers.

Please update your Windows 7 systems and try again installing the driver.