



JP Series Low Voltage Integrated Distribution Switchgear

Knkong Electric Co.,Ltd

No.25 Street,Hanghai Road,Zhengzhou,Henan,China

+86 371 6021 6611

info@knkong.cn

www.knkong.cn www.knkong.cc www.knkong.ru

➤ General

The integrated distribution cabinet is integrated with power distribution/metering/protection/control/reactive power compensation function. This integrated distribution cabinet is extensively used in commercial and residential sectors for low voltage distribution applications. Before offering to the clients, this integrated distribution cabinet is stringently tested in order to ensure its flawless performance. Comply with standard IEC60439



➤ Service environment

1. Air temperature: -25°C---+40°C
2. Humidity: Monthly average humidity 95%; Daily average humidity 90% .
3. Altitude: \leq 2500m
4. Ambient air not apparently polluted by corrosive and flammable gas, vapor etc.
5. No frequent violent shake

➤ Flexibility

The modular design enables customisation for individual requirements, and has the flexibility to suit the changing needs of the LV distribution system.

Maximum flexibility is achieved by the four pole busbar system up to 3200A and the Compact NS range of moulded circuit breakers of ratings up to 630A.

As a complete unit, the JP Integrated distribution cabinet will not only provide circuit protection, but the outgoing circuits can also be controlled individually via hardwired pilots or linked to the incoming breaker. Other “add-on” benefits include remote monitoring and status of each breaker and also remote operation through motor mechanisms.

➤ Safety

CCC certified, providing IP54 operator protection under all circumstances during operation, allowing electrical systems to be fully co-ordinated minimising electrical faults .In addition to the overload and short circuit protection, each breaker can be fitted with earth fault protection.

➤ **Feature**

Knkong JP integrated distribution cabinet enclosure was made of 2mm high quality stainless steel plate after multiple bending flanging process (flame retardant, environmental protection, heat insulation, anti-condensation performance), using special stainless steel welding process, the overall strength after molding, the surface smooth as a mirror, do not leave weld marks ; internal installation of beam (plate) for the hot galvanizing process, to ensure that the twenty years do not rust; the front and rear doors, easy operation and maintenance, the door was edged with high elastic aging sealant, each door is equipped with two types of lock, padlock with anti-rain cover wall rust; whole closed with a sealing device measuring room; the side of the box is equipped with cable lines into the proof of foreign body wear tube, bottom ventilation holes and the cable outlet hole is arranged at the top of ventilation and screen, waterproof Anti rust, dustproof, anti-foreign object function, protection grade: IP54.



➤ **Cost savings**

All weatherproof outdoor enclosures allow the equipment to be located in any outdoor environment, freeing up valuable indoor floor space whilst retaining remote operation and control.

There are a wide range of metering instruments available for monitoring the unit locally or remotely, ensuring efficient operation.

JP series Integrated distribution cabinets are available as part of a package substation with transformers and MVs witch or circuit breakers. Additional cost savings are achieved through direct coupling from the transformer to the JP Integrated distribution cabinet eliminating expensive cable runs



➤ **Outdoor electrical distribution with advanced technology**

Knkong low voltage, JP series Integrated distribution cabinets use 304 stainless steel enclosure with IP54 protection degree suitable for outdoor use

➤ **Main Parameter**

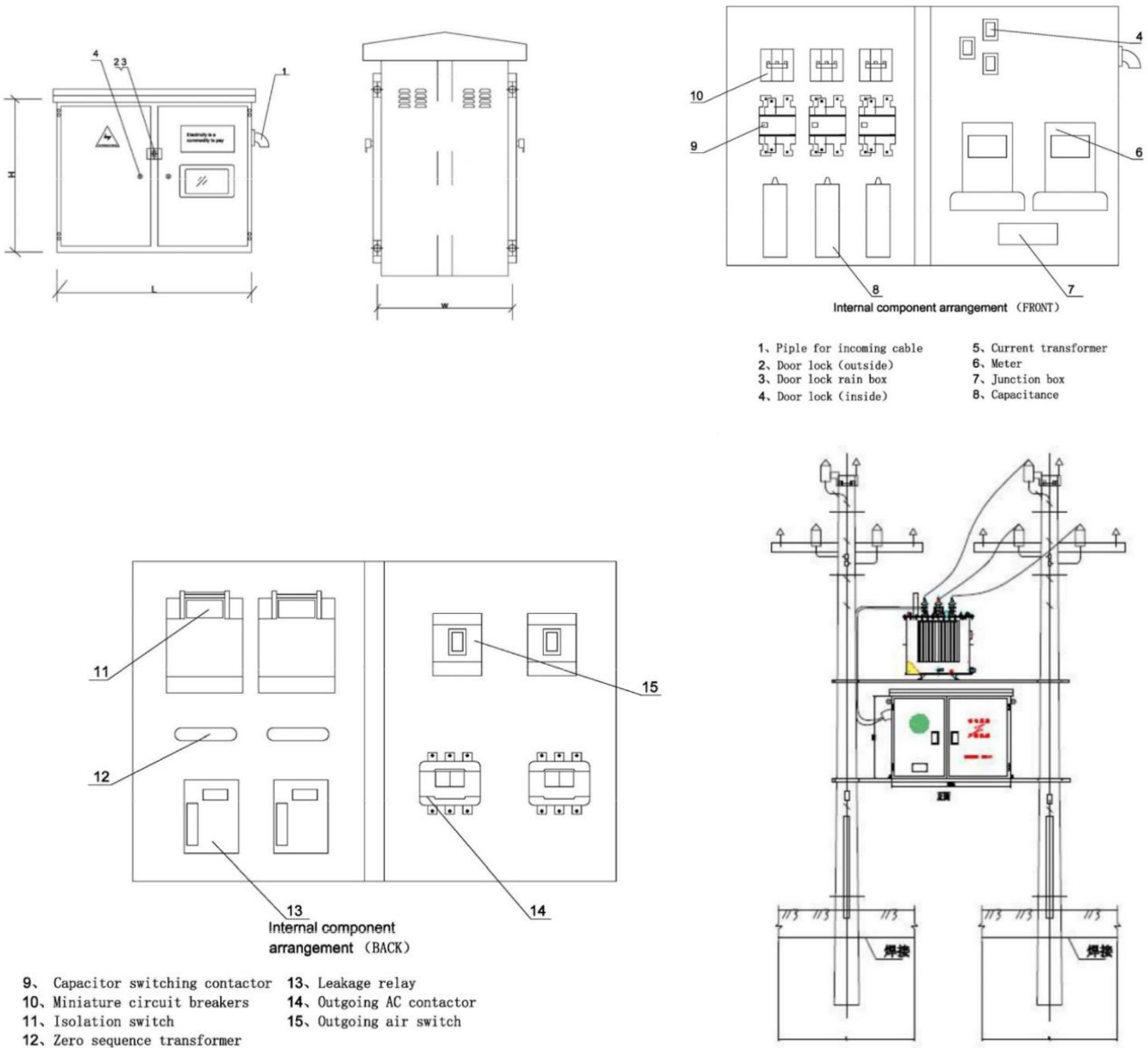
NO.	Description	Unit	Parameter
1	Rated voltage	V	400
2	Rated frequency	HZ	50
3	Capacity	KVA	30 50 63 80 100 125 160 200 250 315 400 500 630
4	Capacitor grouping		2 3 4 5 level(according to user requirements)
5	Busbar Rating	A	630
6	Metal used for busbars		Copper
7	Type of protection used on busbars against corrosion (e.g. heavily tinned)		Tinned Plating
8	Dimensions of busbars (length x width x thickness)	mm	660 x 50x 5
9	Method of connection between busbars and cable lugs (cable lugs not to be provided)		Bolted Type
10	Fixing centre of HRC fuse	mm	90
11	Are safety barriers fitted between phases of the same incoming or outgoing unit?		Yes
12	Are insulating shields fitted between adjacent units?		No
13	Minimum clearance between the lowest cable connection and ground level	mm	300
14	Material used for housing		Hot Dipped Galvanized Sheet
15	Treatment of housing against atmospheric corrosion		7 Tank Process
16	Padlocking facility on housing door		Yes

➤ **Easy installation**

The JP Integrated distribution cabinet comes complete and factory assembled for easy installation in any outdoor location with bottom entry cable through individual gland plates. The cable space is protected by an earthed metal screen, and each breaker is fitted with cable shrouds to maintain IP2X operator protection when the screen is removed.

Addition of new circuits is made easy, by utilising the cassette on the MCCB breaker allows the breaker to be positioned anywhere on the busbar system before being clamped, contributing minimum disruption of supply.

➤ **Instructure**



➤ Ordering Instructions

Below terms should be marked while ordering , **if you have the drawing, please send to us and we can design switchgear as SLD(Single-line diagram) :**

1. Incoming and outgoing
2. With reactive power compensation or not
3. Protection method(MCCM/ELCB or recloser)
4. Breaking capacity

Knkong Electric Co.,Ltd

No.25 Street,Hanghai Road,Zhengzhou,Henan,China

+86 371 6021 6611

info@knkong.cn

English:www.knkong.cn

Español:www.knkong.cc

Русский:www.knkong.ru