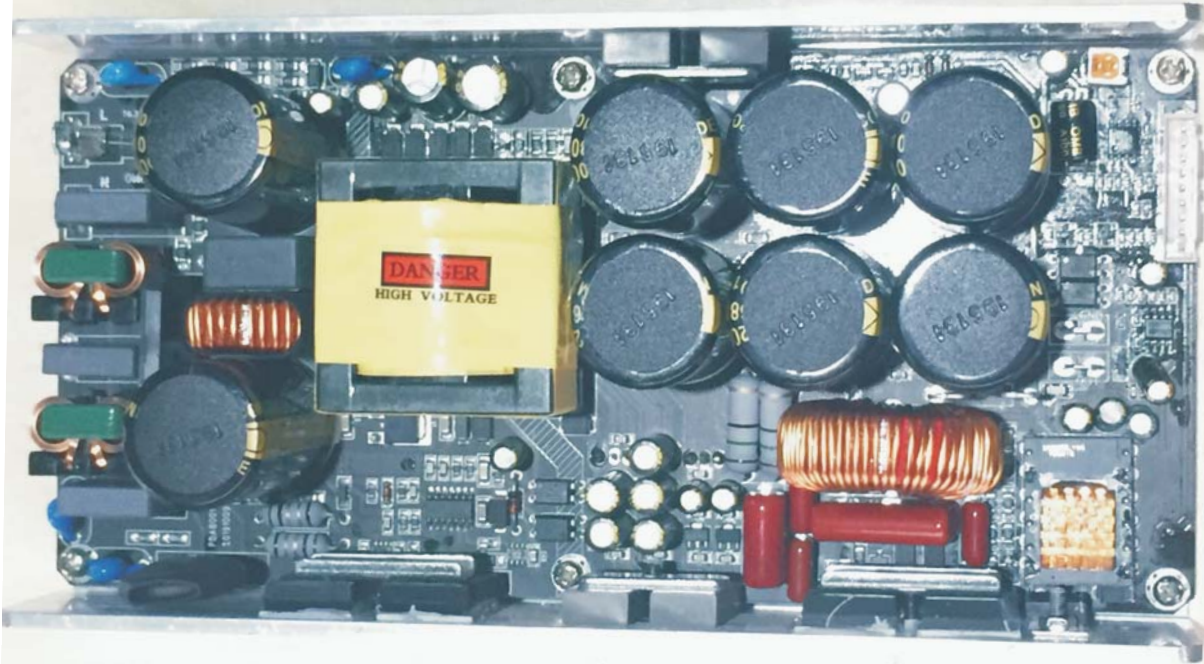


# PDA601/PDA801

High Efficiency 1 Channels Digital Amplifier Module For Professional Applications



## KEY FEATURES

- ④ Compact size and EMI/ safety certification: for quick and easy product developments
- ④ High quality audio: fixed frequency modulation design for predictable high end performances
- ④ High efficiency/Low consumption
- ④ Comprehensive/smart protection features: thermal, overcurrent, non audio signals
- ④ High Performances Optional DSP board

## APPLICATIONS

- ✓ **1/2/channel configurations**
- ✓ **PA amplifiers**
- ✓ **Subwoofer**
- ✓ Modular mono/stereo amplifiers
- ✓ Multi amplification systems

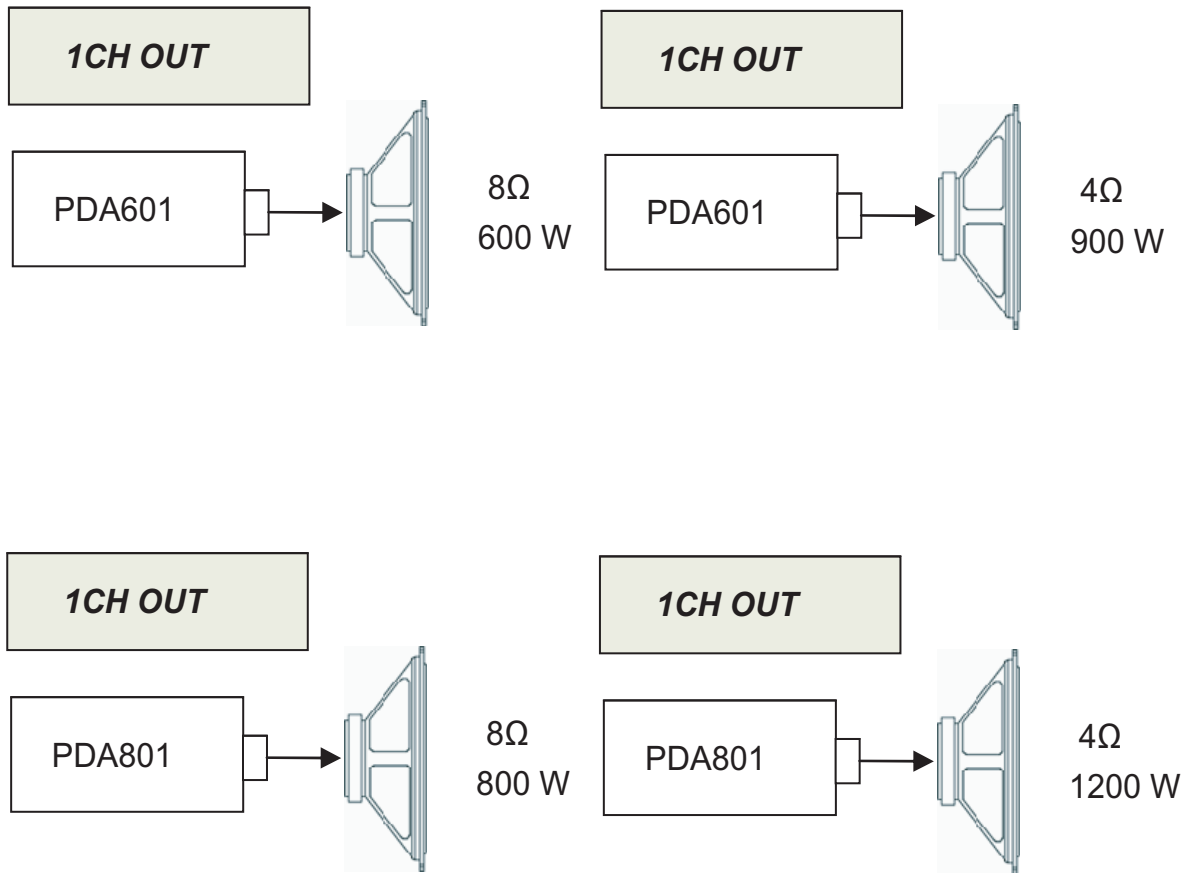
## FUNCTIONS

- ③ Thermal protection (Power limiting, Thermal shutdown)
- ③ Short-circuit / overload output protection
- ③ Power out limiter
- ③ Auxiliary output voltage : +/-15V regulated, 1000mA max; +12V 1000MA;
- ③ Bypass line outputs for external active/passive filters
- ③ Mute command
- ③ Temperature controlled internal Fan and output
- ③ DSP based or Analog processing plugin optional boards

SPECIFICATIONS	PDA601	PDA801
AC230V TEST	<i>OUTPUT POWER PER CHANNEL, STEREO MODE, 1 channels driven</i>	
8Ω 1 kHz 1% THD RMS	600 W	800 W
4Ω 1 kHz 1% THD RMS	900W	1200W
2Ω EAJ 1 kHz 1% THD	1000W	1380W
<b>Typical Distortion</b> (20 Hz–3 kHz, 3 dB below clip, or 20 Hz–5 kHz, 10 dB below clip, or 20 Hz–20 kHz, 20 dB below clip) 4~32ohms	< 0.05 THD	
<b>Maximum Distortion</b> (20 Hz–20 kHz, 1 dB below rated power) 4 to 8 ohms	0.05%	
<b>Frequency Response</b> (8 ohms)	20 Hz–20 kHz, ±2dB	
<b>Noise</b> (20 Hz–20 kHz, 32 dB Gain)	500 uV	600uV
<b>Dynamic Headroom</b> (8 ohms)	8dB	
<b>Damping Factor</b> (8 ohms) EAJ	1200	
<b>Output Circuitry</b>	Class D	
<b>Input Sensitivity</b> 36 dB Setting	2.6V	2.6V
<b>Maximum Gain</b> (2V setting)	32	33dB
<b>AC Power Requirements **</b> 230V 50 Hz	5A	6.3A
<b>ALL MODELS</b>		
<b>Input Impedance</b>	> 10 kΩ balanced, 20K or unbalanced	
<b>Cooling</b>	Variable-speed fan, rear-to-front air flow	
<b>Connectors</b> (each channel)	Input: XLR Male, XLR Female and 3-pin detachable terminal blocks (1 each per channel)	
	Output: Neutrik Speakon® (channel wired to both channels) and 5-way binding posts	
	DataPort: HD-15, input signal in parallel with XLR input connectors	
<b>Front Controls</b>		

## APPLICATION EXAMPLES

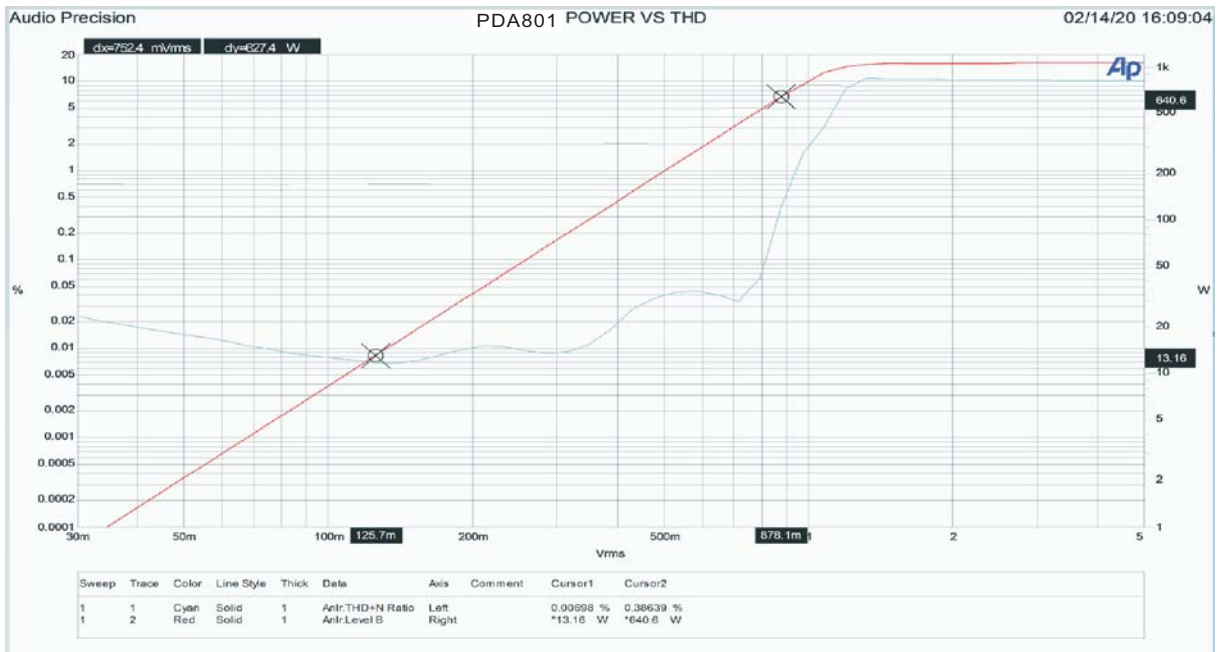
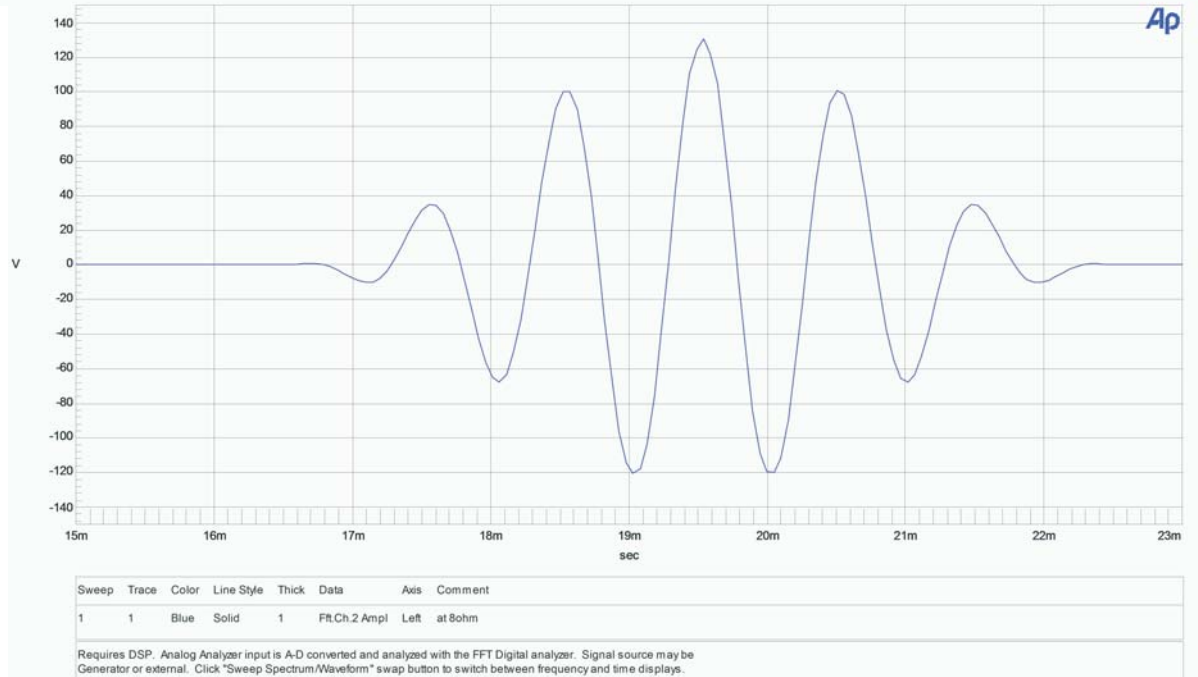
---

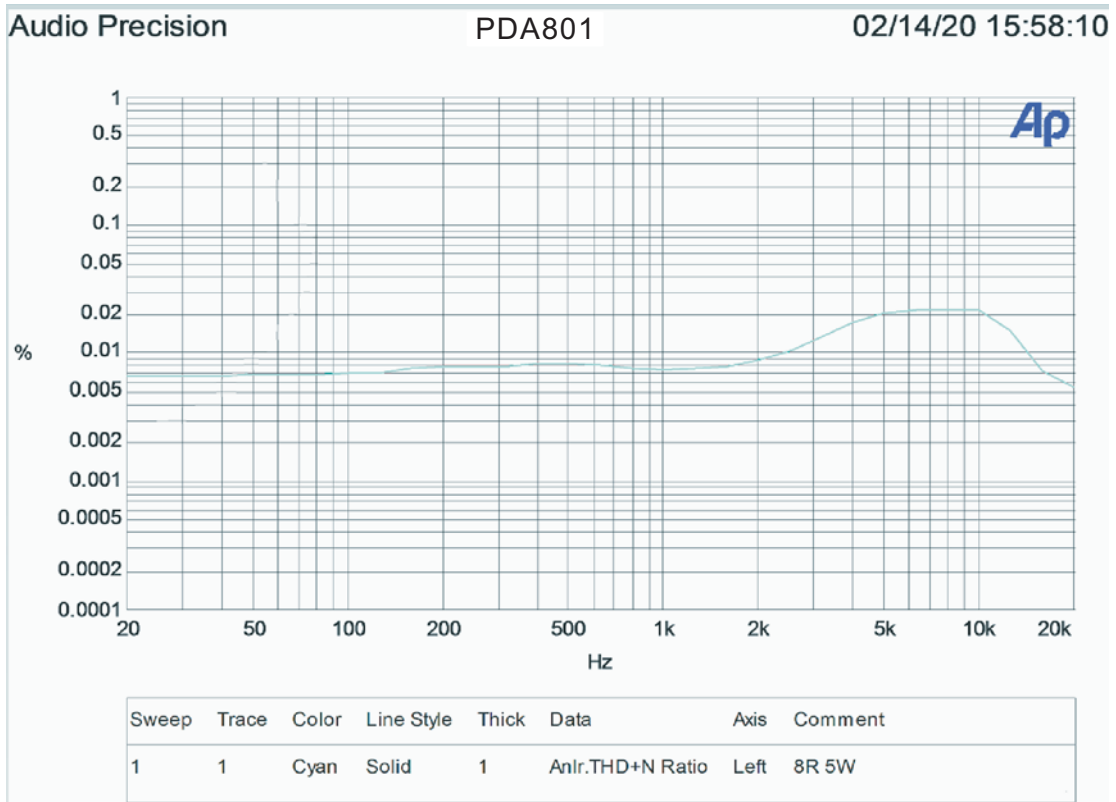
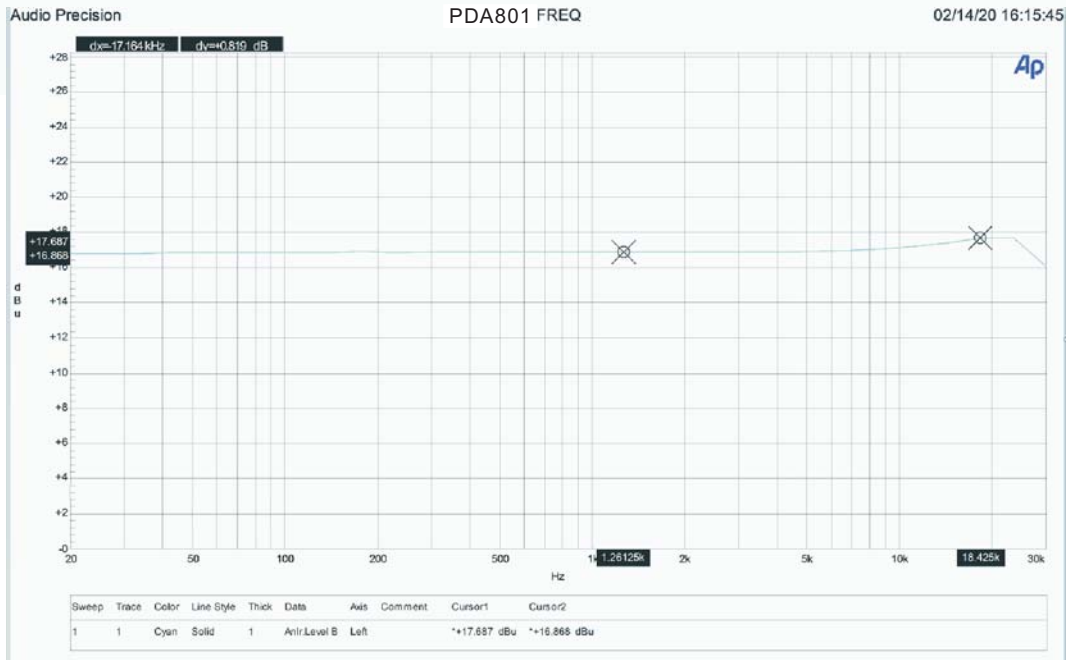


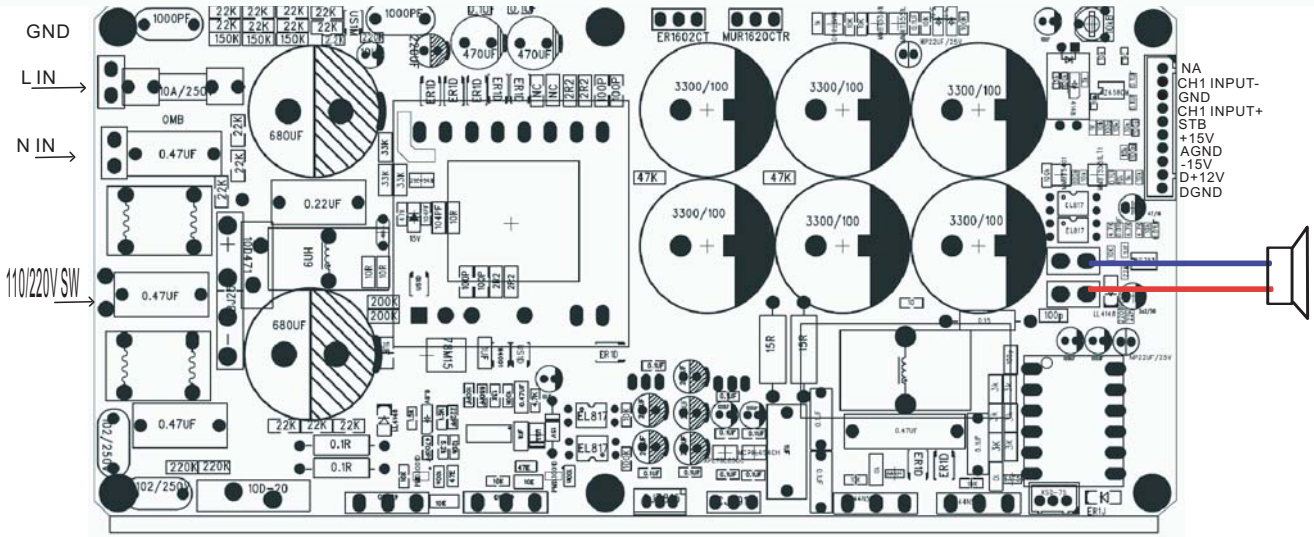
Audio Precision

pda801 vpp test

02/19/20 13:31:35







- 1: STB TO GND IS MUTE
- 2: +/-15V OUT 500MA
- 3: D+12V OUT 500MA
- 4: Bridge applications must be ch1 or ch2 input to the inverting, ch1out+ ch2out+ To speak

