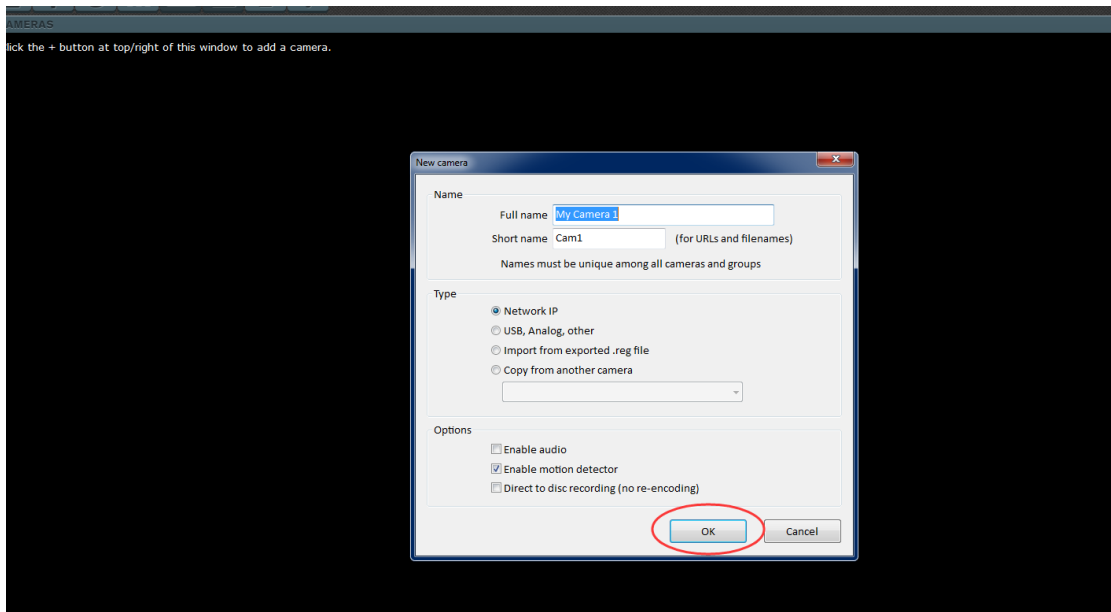


## How to use Blue Iris to add our camera

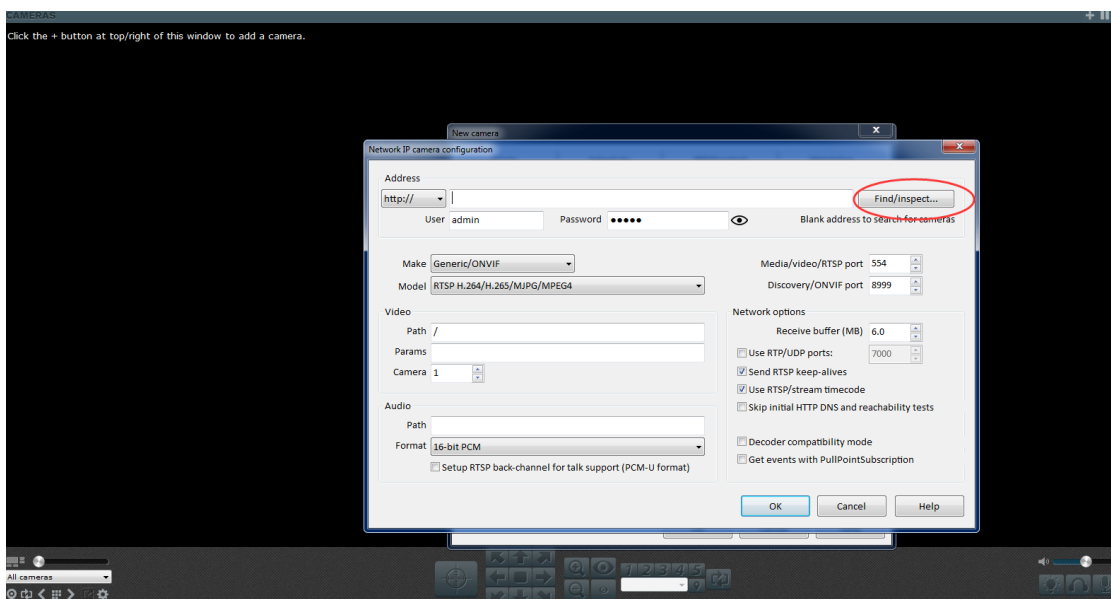


1. First run the Blue Iris

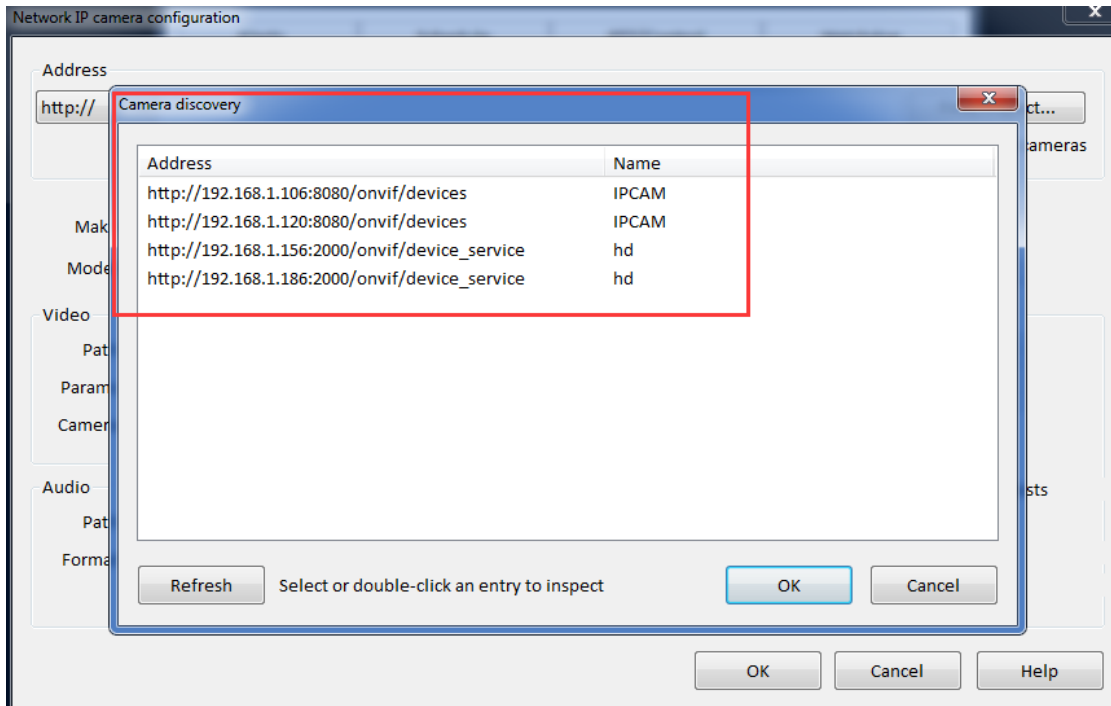
2. Right click to add camera and click Ok



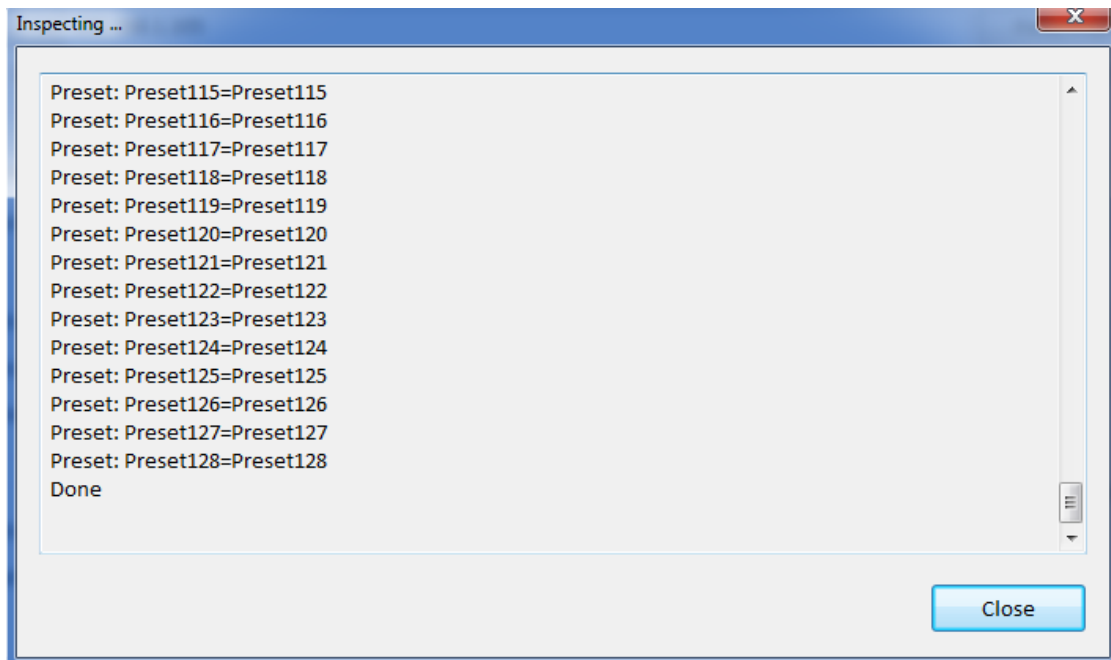
3. Click "Find/inspect" in the following page



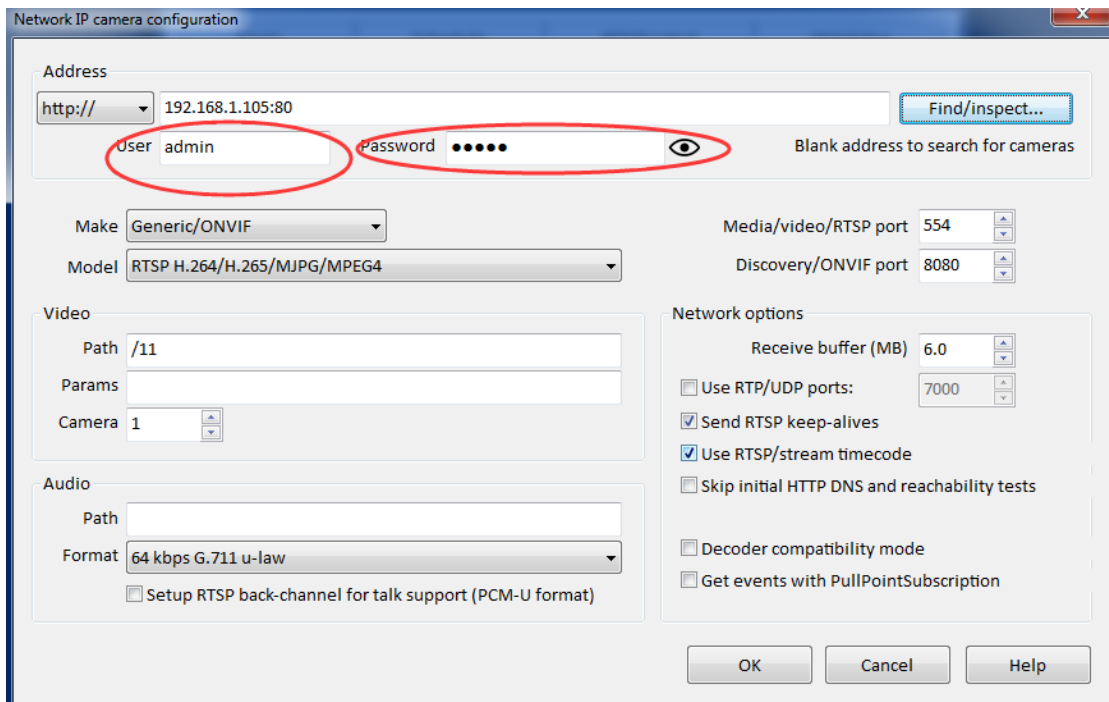
## 4. It will find the online IP Camera



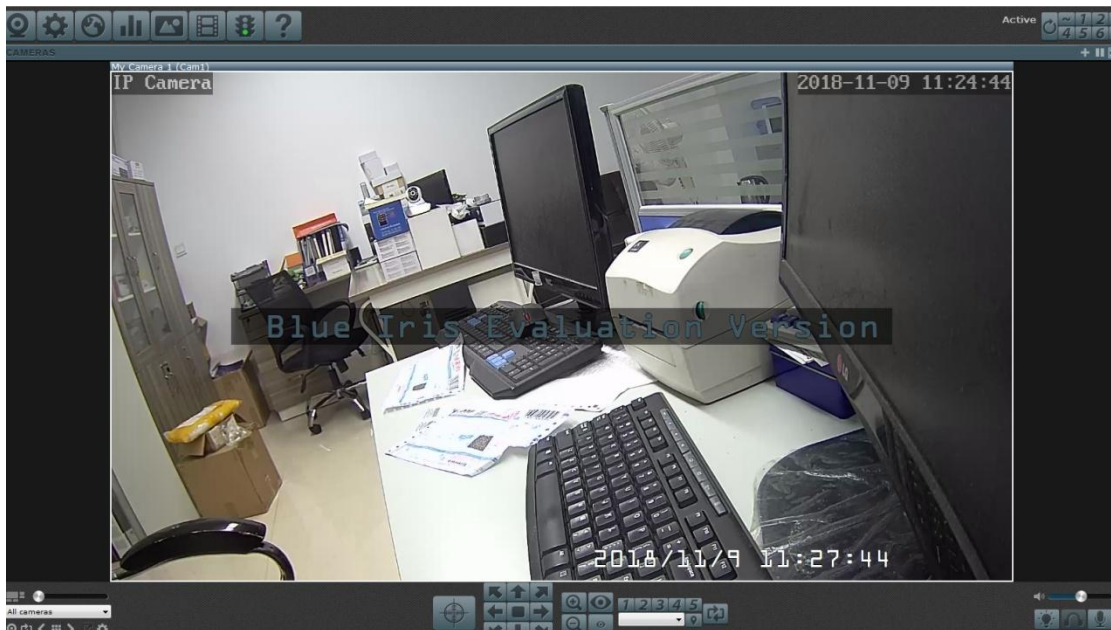
## 5. Select your IP Camera and click Ok, it will inspect the camera automatically



**6. After this, we will back to the Network IP Camera configuration page, make sure you input the correct User and Password, then click Ok.**



**7. Click OK then you can see the IP Camera video**



## 8. You can select other function by click the right menu.

